



# Portfolio Optimization **with R/Rmetrics**

Diethelm Würtz  
Yohan Chalabi  
William Chen  
Andrew Ellis





Diethelm Würtz  
Yohan Chalabi  
William Chen  
Andrew Ellis

# Portfolio Optimization with R/Rmetrics

May 11, 2009

Rmetrics Association & Finance Online  
Zurich





*Series Editors:*

PD Dr. Diethelm Würtz  
Institute of Theoretical Physics and  
Curriculum for Computational Science  
Swiss Federal Institute of Technology  
Hönggerberg, HIT K 32.2  
8093 Zurich

Dr. Martin Hanf  
Finance Online GmbH  
Weinbergstrasse 41  
8006 Zurich

*Contact Address:*

Rmetrics Association  
Weinbergstrasse 41  
8006 Zurich  
info@rmetrics.org

*Publisher:*

Finance Online GmbH  
Swiss Information Technologies  
Weinbergstrasse 41  
8006 Zurich

*Authors:*

Yohan Chalabi, ETH Zurich  
William Chen, University of Auckland  
Andrew Ellis, Finance Online GmbH Zurich  
Diethelm Würtz, ETH Zurich

ISBN:

eISBN:

DOI:

© 2009, Finance Online GmbH, Zurich

All rights reserved. This work may not be translated or copied in whole or in part without the written permission of the publisher (Finance Online GmbH) except for brief excerpts in connection with reviews or scholarly analysis. Use in connection with any form of information storage and retrieval, electronic adaptation, computer software, or by similar or dissimilar methodology now known or hereafter developed is forbidden.

**Limit of Liability/Disclaimer of Warranty:** While the publisher and authors have used their best efforts in preparing this book, they make no representations or warranties with respect to the accuracy or completeness of the contents of this book and specifically disclaim any implied warranties of merchantability or fitness for a particular purpose. No warranty may be created or extended by sales representatives or written sales materials. The advice and strategies contained herein may not be suitable for your situation. You should consult with a professional where appropriate. Neither the publisher nor authors shall be liable for any loss of profit or any other commercial damages, including but not limited to special, incidental, consequential, or other damages.

**Trademark notice:** Product or corporate names may be trademarks or registered trademarks, and are used only for identification and explanation, without intent to infringe.

## **Revision History**

May 2009: 1st edition

Version control information : Revision 1087

# Contents

<b>Preface</b>	<b>xi</b>
<b>Contents</b>	<b>xvii</b>
<b>List of Figures</b>	<b>xxv</b>
<b>List of R Code</b>	<b>xxix</b>
<b>List of Abbreviations</b>	<b>xxxiii</b>
<b>Introduction</b>	<b>1</b>
<b>Part I Managing Data Sets of Assets</b>	<b>3</b>
<b>Introduction</b>	<b>5</b>
<b>1 Generic Functions to Manipulate Assets</b>	<b>7</b>
1.1 timeDate and timeSeries Objects . . . . .	8
1.2 Loading timeSeries Data Sets . . . . .	9
1.3 Sorting and Reverting Assets . . . . .	11
1.4 Alignment of Assets . . . . .	14
1.5 Binding and Merging Assets . . . . .	15
1.6 Subsetting Assets . . . . .	20



1.7	Aggregating Assets . . . . .	23
1.8	Rolling Assets . . . . .	25
<b>2</b>	<b>Financial Functions to Manipulate Assets</b>	<b>31</b>
2.1	Price and Index Series . . . . .	31
2.2	Return and Cumulated Return Series . . . . .	32
2.3	Drawdowns Series . . . . .	34
2.4	Durations Series . . . . .	35
2.5	How to Add Your Own Functions . . . . .	36
<b>3</b>	<b>Basic Statistics of Financial Assets</b>	<b>41</b>
3.1	Summary Statistics . . . . .	41
3.2	Sample Mean and Covariance Estimates . . . . .	44
3.3	Estimates for Higher Moments . . . . .	46
3.4	Quantiles and Related Risk Measures . . . . .	47
3.5	Computing Column Statistics . . . . .	49
3.6	Computing Cumulated Column Statistics . . . . .	50
<b>4</b>	<b>Robust Mean and Covariance Estimates of Assets</b>	<b>51</b>
4.1	Robust Covariance Estimators . . . . .	52
4.2	Comparisons of Robust Covariances . . . . .	54
4.3	Minimum Volume Ellipsoid Estimator . . . . .	54
4.4	Minimum Covariance Determinant Estimator . . . . .	55
4.5	Orthogonalized Gnanadesikan-Kettenring Estimator . . . . .	59
4.6	Nearest-Neighbour Variance Estimator . . . . .	59
4.7	Shrinkage Estimator . . . . .	61
4.8	Bagging Estimator . . . . .	62
4.9	How to Add a New Estimator to the Suite . . . . .	63
4.10	How to Detect Outliers in a Set of Assets . . . . .	64
	<b>Part II Exploratory Data Analysis of Assets</b>	<b>67</b>
	<b>Introduction</b>	<b>69</b>

<b>5</b>	<b>Plotting Financial Time Series And Their Properties</b>	<b>71</b>
5.1	Financial Time Series Plots . . . . .	71
5.2	Box Plots . . . . .	83
5.3	Histogram and Density Plots . . . . .	87
5.4	Quantile-Quantile Plots . . . . .	90
<b>6</b>	<b>Customization of Plots</b>	<b>95</b>
6.1	Plot Labels . . . . .	95
6.2	More About Plot Function Arguments . . . . .	98
6.3	Selecting Colours . . . . .	102
6.4	Selecting Character Fonts . . . . .	109
6.5	Selecting Plot Symbols . . . . .	112
<b>7</b>	<b>Modelling Assets Returns</b>	<b>117</b>
7.1	Testing Assets Returns for Normality . . . . .	117
7.2	Fitting Assets Returns . . . . .	120
7.3	Simulating Asset Returns from a given Distribution . . . . .	123
<b>8</b>	<b>Selecting Similar or Dissimilar Assets</b>	<b>125</b>
8.1	Functions for Grouping Similar Assets . . . . .	125
8.2	Grouping Asset Returns by Hierarchical Clustering . . . . .	126
8.3	Grouping Asset Returns by k-means Clustering . . . . .	131
8.4	Grouping Asset Returns through Eigenvalue Analysis . . . . .	133
8.5	Grouping Asset Returns by Contributed Cluster Algorithms . . . . .	133
8.6	Ordering Data Sets of Assets . . . . .	137
<b>9</b>	<b>Comparing Multivariate Return and Risk Statistics</b>	<b>139</b>
9.1	Stars and Segments Plots . . . . .	139
9.2	Segments Plots of Basic Return Statistics . . . . .	141
9.3	Segments Plots of Distribution Moments . . . . .	141
9.4	Segments Plots of Box Plot Statistics . . . . .	144
9.5	How to Position Stars and Segments in Stars Plots . . . . .	144
<b>10</b>	<b>Pairwise Dependencies of Assets</b>	<b>147</b>
10.1	Simple Pairwise Scatter Plots of Assets . . . . .	147

10.2	Pairwise Correlations Between Assets . . . . .	152
10.3	Tests of Pairwise Correlations . . . . .	156
10.4	Image Plot of Correlations . . . . .	157
10.5	Bivariate Histogram Plots . . . . .	159
 <b>Part III Portfolio Framework</b>		<b>165</b>
<b>Introduction</b>		<b>167</b>
<b>11</b>	<b>S4 Portfolio Specification Class</b>	<b>169</b>
11.1	Class Representation . . . . .	169
11.2	The Model Slot . . . . .	174
11.3	The Portfolio Slot . . . . .	179
11.4	The Optim Slot . . . . .	184
11.5	The Message Slot . . . . .	187
11.6	Consistency Checks on Specifications . . . . .	188
<b>12</b>	<b>S4 Portfolio Data Class</b>	<b>189</b>
12.1	Class Representation . . . . .	189
12.2	The Data Slot . . . . .	193
12.3	The Statistics Slot . . . . .	193
<b>13</b>	<b>S4 Portfolio Constraints Class</b>	<b>197</b>
13.1	Class Representation . . . . .	197
13.2	Long-Only Constraints String . . . . .	200
13.3	Unlimited Short Selling Constraints String . . . . .	202
13.4	Box Constraints Strings . . . . .	202
13.5	Group Constraints Strings . . . . .	204
13.6	Covariance Risk Budget Constraints Strings . . . . .	205
13.7	Non-Linear Weight Constraints Strings . . . . .	207
13.8	Case study: How To Construct Complex Portfolio Constraints . . . . .	208
<b>14</b>	<b>Portfolio Functions</b>	<b>213</b>
14.1	S4 Class Representation . . . . .	213

Contents	xxi
<b>Part IV Mean-Variance Portfolios</b>	<b>219</b>
<b>Introduction</b>	<b>221</b>
<b>15 Markowitz Portfolio Theory</b>	<b>223</b>
15.1 The Minimum Risk Mean-Variance Portfolio . . . . .	223
15.2 The Feasible Set and the Efficient Frontier . . . . .	225
15.3 The Minimum Variance Portfolio . . . . .	225
15.4 The Capital Market Line and Tangency Portfolio . . . . .	225
15.5 Box and Group Constrained Mean-Variance Portfolios . . . . .	227
15.6 Maximum Return Mean-Variance Portfolios . . . . .	228
15.7 Covariance Risk Budgets Constraints . . . . .	228
<b>16 Mean-Variance Portfolio Settings</b>	<b>231</b>
16.1 Step 1: Portfolio Data . . . . .	231
16.2 Step 2: Portfolio Specification . . . . .	232
16.3 Step 3: Portfolio Constraints . . . . .	233
<b>17 Minimum Risk Mean-Variance Portfolios</b>	<b>235</b>
17.1 How to Compute a Feasible Portfolio . . . . .	235
17.2 How to Compute a Minimum Risk Efficient Portfolio . . . . .	238
17.3 How to Compute the Global Minimum Variance Portfolio . . . . .	239
17.4 How to Compute the Tangency Portfolio . . . . .	243
17.5 How to Customize a Pie Plot . . . . .	244
<b>18 Mean-Variance Portfolio Frontiers</b>	<b>247</b>
18.1 Frontier Computation and Graphical Displays . . . . .	247
18.2 The 'long-only' Portfolio Frontier . . . . .	252
18.3 The Unlimited 'short' Portfolio Frontier . . . . .	256
18.4 The Box-Constrained Portfolio Frontier . . . . .	257
18.5 The Group-Constrained Portfolio Frontier . . . . .	261
18.6 The Box/Group-Constrained Portfolio Frontier . . . . .	265
18.7 Creating Different 'Reward/Risk Views' on the Efficient Frontier . . . .	270
<b>19 Case Study: Dow Jones Index</b>	<b>273</b>

<b>20 Robust Portfolios and Covariance Estimation</b>	<b>277</b>
20.1 Robust Mean and Covariance Estimators . . . . .	278
20.2 The MCD Robustified Mean-Variance Portfolio . . . . .	279
20.3 The MVE Robustified Mean-Variance Portfolio . . . . .	281
20.4 The OGK Robustified Mean-Variance Portfolio . . . . .	287
20.5 The Shrunked Mean-Variance Portfolio . . . . .	292
20.6 How to Write Your Own Covariance Estimator . . . . .	293
 <b>Part V Mean-CVaR Portfolios</b>	 <b>301</b>
<b>Introduction</b>	<b>301</b>
 <b>21 Mean-CVaR Portfolio Theory</b>	 <b>303</b>
21.1 Solution of the Mean-CVaR Portfolio . . . . .	304
21.2 Discretization . . . . .	305
21.3 Linearization . . . . .	307
 <b>22 Mean-CVaR Portfolio Settings</b>	 <b>309</b>
22.1 Step 1: Portfolio Data . . . . .	309
22.2 Step 2: Portfolio Specification . . . . .	309
22.3 Step 3: Portfolio Constraints . . . . .	311
 <b>23 Mean-CVaR Portfolios</b>	 <b>313</b>
23.1 How to Compute a Feasible Mean-CVaR Portfolio . . . . .	313
23.2 How to Compute the Mean-CVaR Portfolio with the Lowest Risk for a Given Return . . . . .	316
23.3 How to Compute the Global Minimum Mean-CVaR Portfolio . . . . .	317
 <b>24 Mean-CVaR Portfolio Frontiers</b>	 <b>323</b>
24.1 The Long-only Portfolio Frontier . . . . .	324
24.2 The Unlimited ‘Short’ Portfolio Frontier . . . . .	326
24.3 The Box-Constrained Portfolio Frontier . . . . .	332
24.4 The Group-Constrained Portfolio Frontier . . . . .	333
24.5 The Box/Group-Constrained Portfolio Frontier . . . . .	339

Contents	xxiii
24.6 Other Constraints . . . . .	340
24.7 More About the Frontier Plot Tools . . . . .	340
<b>Part VI Portfolio Backtesting</b>	<b>347</b>
<b>Introduction</b>	<b>349</b>
<b>25 S4 Portfolio Backtest Class</b>	<b>351</b>
25.1 Class Representation . . . . .	351
25.2 The Windows Slot . . . . .	353
25.3 The Strategy Slot . . . . .	358
25.4 The Smoother Slot . . . . .	360
25.5 Rolling Analysis . . . . .	365
<b>26 Case Study: SPI Sector Rotation</b>	<b>375</b>
26.1 SPI Portfolio Backtesting . . . . .	375
26.2 SPI Portfolio Weights Smoothing . . . . .	377
26.3 SPI Portfolio Backtest Plots . . . . .	377
26.4 SPI Performance Review . . . . .	378
<b>27 Case Study: GCC Index Rotation</b>	<b>381</b>
27.1 GCC Portfolio Weights Smoothing . . . . .	382
27.2 GCC Performance Review . . . . .	384
27.3 Alternative Strategy . . . . .	384
<b>Part VII Appendix</b>	<b>387</b>
<b>A Packages Required for this ebook</b>	<b>389</b>
<b>B Description of Data Sets</b>	<b>399</b>
B.1 Data Set: SWX . . . . .	399
B.2 Data Set: LPP2005 . . . . .	400
B.3 Data Set: SPISECTOR . . . . .	400
B.4 Data Set: SMALLCAP . . . . .	401

B.5 Data Set: GCCINDEX . . . . .	402
<b>Bibliography</b>	<b>403</b>
<b>Index</b>	<b>408</b>
<b>About the Authors</b>	<b>411</b>

## Chapter 20

# Robust Portfolios and Covariance Estimation

Required R package(s):

```
> library(fPortfolio)
> library(robustbase)
> library(corpcor)
```

Mean-variance portfolios constructed using the sample mean and covariance matrix of asset returns often perform poorly out-of-sample due to estimation errors in the mean vector and covariance matrix. As a consequence, minimum-variance portfolios may yield unstable weights that fluctuate substantially over time. This loss of stability may also lead to extreme portfolio weights and dramatic swings in weights with only minor changes in expected returns or the covariance matrix. Consequentially, we observe frequent re-balancing and excessive transaction costs.

To achieve better stability properties compared to traditional minimum-variance portfolios, we try to reduce the estimation error using robust methods to compute the mean and/or covariance matrix of the set of financial assets. Two different approaches are implemented: robust mean and covariance estimators, and the shrinkage estimator<sup>1</sup>.

If the number of time series records is small and the number of considered assets increases, then the sample estimator of covariance becomes more and more unstable. Specifically, it is possible to provide estimators that improve considerably upon the maximum likelihood estimate in terms of mean-squared error. Moreover, when the number of records is smaller

---

<sup>1</sup> For further information, we recommend the text book by [Marazzi \(1993\)](#)



than the number of assets, the empirical estimate of the covariance matrix becomes singular.

## 20.1 Robust Mean and Covariance Estimators

In the mean-variance portfolio approach, the sample mean and sample covariance estimators are used by default to estimate the mean vector and covariance matrix.

This information, i.e. the name of the covariance estimator function, is kept in the specification structure and can be shown by calling the function `getEstimator()`. The default setting is

```
> getEstimator(portfolioSpec())
[1] "covEstimator"
```

There are many different implementations of robust and related estimators for the mean and covariance in R's base packages and in contributed packages. The estimators listed below can be accessed by the portfolio optimization program.

---

Functions:	
<code>covEstimator</code>	Covariance sample estimator
<code>kendallEstimator</code>	Kendall's rank estimator
<code>spearmanEstimator</code>	Spearman's rank estimator
<code>mcdEstimator</code>	MCD, minimum covariance determinant estimator
<code>mveEstimator</code>	MVE, minimum volume ellipsoid estimator
<code>covMcdEstimator</code>	Minimum covariance determinant estimator
<code>covOGKEstimator</code>	Orthogonalized Gnanadesikan-Kettenring estimator
<code>shrinkEstimator</code>	Shrinkage covariance estimator
<code>baggedEstimator</code>	Bagged covariance estimator

---

**Listing 20.1** Rmetrics functions to estimate robust covariances for portfolio optimization

## 20.2 The MCD Robustified Mean-Variance Portfolio

The *minimum covariance determinant*, MCD, estimator of location and scatter looks for the  $h > n/2$  observations out of  $n$  data records whose classical covariance matrix has the lowest possible determinant. The raw MCD estimate of location is then the average of these  $h$  points, whereas the raw MCD estimate of scatter is their covariance matrix, multiplied by a consistency factor and a finite sample correction factor (to make it consistent with the normal model and unbiased for small sample sizes).

The algorithm from the MASS library is quite slow, whereas the one from contributed package *robustbase* (Rousseeuw, Croux, Todorov, Ruckstuhl, Salibián-Barrera, Verbeke & Maechler, 2008) is much more time-efficient. The implementation in *robustbase* uses the fast MCD algorithm of Rousseeuw & Van Driessen (1999). To optimize a Markowitz mean-variance portfolio, we just have to specify the name of the mean/covariance estimator function. Unfortunately, this can take some time since we have to apply the MCD estimator in every instance when we call the function `covMcdEstimator()`. To circumvent this, we perform the covariance estimation only once at the very beginning, store the value globally, and use its estimate in the new function `fastCovMcdEstimator()`.

```
> lppData <- 100 * LPP2005.RET[, 1:6]
> covMcdEstimate <- covMcdEstimator(lppData)
> fastCovMcdEstimator <-
  function(x, spec = NULL, ...)
    covMcdEstimate
```

Next we define the portfolio specification

```
> covMcdSpec <- portfolioSpec()
> setEstimator(covMcdSpec) <- "fastCovMcdEstimator"
> setNFrontierPoints(covMcdSpec) <- 5
```

and optimize the MCD robustified portfolio (with long-only default constraints).

```
> covMcdFrontier <- portfolioFrontier(
  data = lppData, spec = covMcdSpec)
> print(covMcdFrontier)
```

```
Title:
MV Portfolio Frontier
Estimator:      fastCovMcdEstimator
Solver:         solveRquadprog
Optimize:       minRisk
Constraints:     LongOnly
Portfolio Points: 5 of 5
```

```
Portfolio Weights:
      SBI    SPI    SII    LMI    MPI    ALT
1 1.0000 0.0000 0.0000 0.0000 0.0000 0.0000
2 0.1379 0.0377 0.1258 0.5562 0.0000 0.1424
3 0.0000 0.0998 0.2088 0.3712 0.0000 0.3202
4 0.0000 0.1661 0.2864 0.0430 0.0000 0.5046
5 0.0000 0.0000 0.0000 0.0000 0.0000 1.0000
```

```
Covariance Risk Budgets:
      SBI    SPI    SII    LMI    MPI    ALT
1 1.0000 0.0000 0.0000 0.0000 0.0000 0.0000
2 0.0492 0.1434 0.1209 0.2452 0.0000 0.4413
3 0.0000 0.2489 0.0878 -0.0071 0.0000 0.6704
4 0.0000 0.2624 0.0660 -0.0027 0.0000 0.6743
5 0.0000 0.0000 0.0000 0.0000 0.0000 1.0000
```

```
Target Return and Risks:
      mean    mu    Cov    Sigma    CVaR    VaR
1 0.0000 0.0000 0.1261 0.1304 0.2758 0.2177
2 0.0215 0.0215 0.1242 0.1153 0.2552 0.1733
3 0.0429 0.0429 0.2493 0.2117 0.5698 0.3561
4 0.0643 0.0643 0.4023 0.3363 0.9504 0.5574
5 0.0858 0.0858 0.5684 0.5016 1.3343 0.8978
```

```
Description:
Mon May 4 12:04:50 2009 by user: Rmetrics
```

Note that for the Swiss Pension Fund benchmark data set the "covMcdEstimator" is about 20 time slower than the sample covariance estimator, and the "mcdEstimator" is even slower by a factor of about 300.

For the plot we recalculate the frontier on 20 frontier points.

```
> setNFrontierPoints(covMcdSpec) <- 20
> covMcdFrontier <- portfolioFrontier(
  data = lppData, spec = covMcdSpec)
> tailoredFrontierPlot(
  covMcdFrontier,
```

```
mText = "MCD Robustified MV Portfolio",
risk = "Sigma")
```

The frontier plot is shown in [Figure 20.1](#).

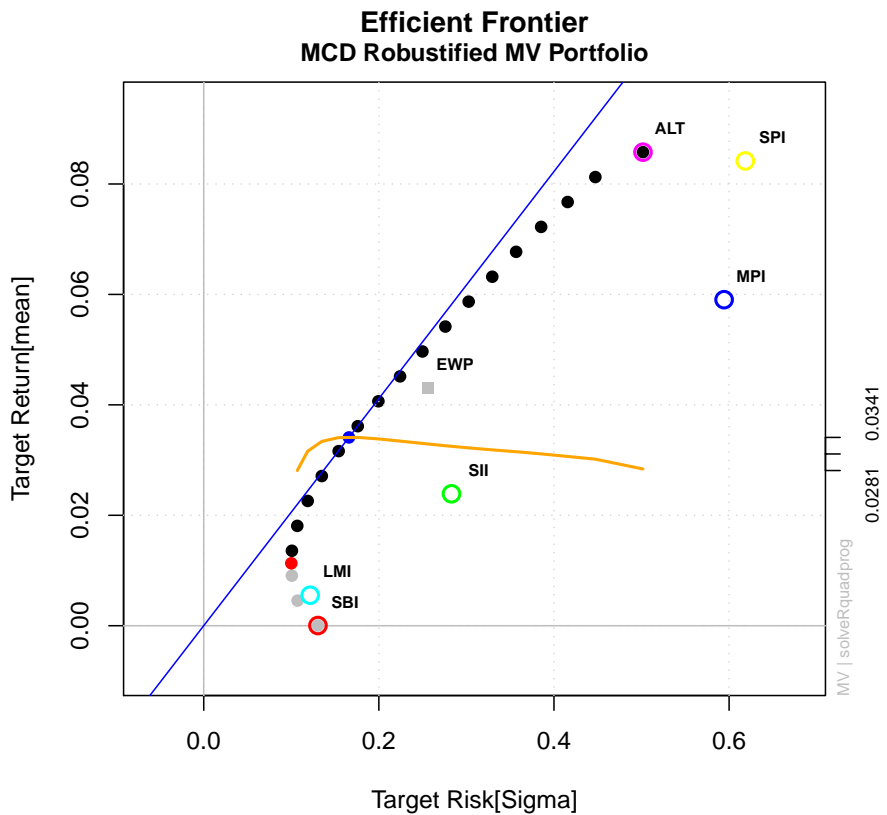
To display the weights, risk attributions and covariance risk budgets for the MCD robustified portfolio in the left-hand column and the same plots for the sample covariance MV portfolio in the right-hand column of a figure:

```
> ## MCD robustified portfolio
> par(mfcol = c(3, 2), mar = c(3.5, 4, 4, 3) + 0.1)
> col = qualiPalette(30, "Dark2")
> weightsPlot(covMcdFrontier, mtext = FALSE, col = col)
> text <- "MCD"
> mtext(text, side = 3, line = 3, font = 2, cex = 0.9)
> weightedReturnsPlot(covMcdFrontier, mtext = FALSE, col = col)
> covRiskBudgetsPlot(covMcdFrontier, mtext = FALSE, col = col)
> ## Sample covariance MV portfolio
> longSpec <- portfolioSpec()
> setNFrontierPoints(longSpec) <- 20
> longFrontier <- portfolioFrontier(data = lppData, spec = longSpec)
> col = qualiPalette(30, "Set1")
> weightsPlot(longFrontier, mtext = FALSE, col = col)
> text <- "COV"
> mtext(text, side = 3, line = 3, font = 2, cex = 0.9)
> weightedReturnsPlot(longFrontier, mtext = FALSE, col = col)
> covRiskBudgetsPlot(longFrontier, mtext = FALSE, col = col)
```

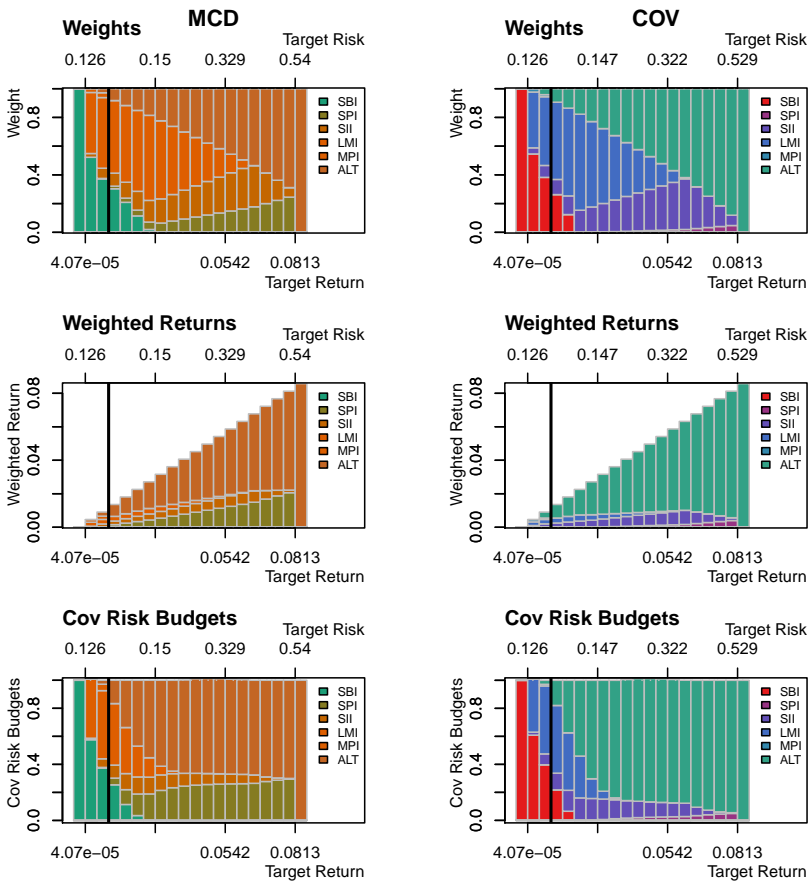
The weights, risk attributions and covariance risk budgets are shown in [Figure 20.2](#).

## 20.3 The MVE Robustified Mean-Variance Portfolio

[Rousseeuw & Leroy \(1987\)](#) proposed a very robust alternative to classical estimates of mean vectors and covariance matrices, the Minimum Volume Ellipsoid, MVE. Samples from a multivariate normal distribution form ellipsoid-shaped ‘clouds’ of data points. The MVE corresponds to the smallest point cloud containing at least half of the observations, the uncontaminated portion of the data. These ‘clean’ observations are used for preliminary estimates of the mean vector and the covariance matrix. Using



**Figure 20.1** Efficient frontier of a long-only constrained mean-variance portfolio with robust MCD covariance estimates: The plot includes the efficient frontier, the tangency line and tangency point for a zero risk-free rate, the equal weights portfolio, EWP, all single assets risk vs. return points. The line of Sharpe ratios is also shown, with its maximum coinciding with the tangency portfolio point. The range of the Sharpe ratio is printed on the right hand side axis of the plot.



**Figure 20.2** Weights plot for MCD robustified and COV MV portfolios. Weights along the efficient frontier of a long-only constrained mean-variance portfolio with robust MCD (left) and sample (right) covariance estimates: The graphs from top to bottom show the weights, the weighted returns or in other words the performance attribution, and the covariance risk budgets, which are a measure for the risk attribution. The upper axis labels the target risk, and the lower labels the target return. The thick vertical line separates the efficient frontier from the minimum variance locus. The risk axis thus increases in value to both sides of the separator line. The legend to the right links the assets names to colour of the bars.

these estimates, the program computes a robust Mahalanobis distance for every observation vector in the sample. Observations for which the robust Mahalanobis distances exceed the 97.5% significance level for the chi-square distribution are flagged as probable outliers.

Rmetrics provides a function, `mveEstimator()`, to compute the MVE estimator; it is based on the `cov.rob()` estimator from the MASS package. We define a function called `fastMveEstimator()`

```
> mveEstimate <- mveEstimator(lppData)
> fastMveEstimator <- function(x, spec = NULL, ...) mveEstimate
```

and set the portfolio specifications

```
> mveSpec <- portfolioSpec()
> setEstimator(mveSpec) <- "fastMveEstimator"
> setNFrontierPoints(mveSpec) <- 5
```

Then we compute the MVE robustified efficient frontier

```
> mveFrontier <- portfolioFrontier(
  data = lppData,
  spec = mveSpec,
  constraints = "LongOnly")
> print(mveFrontier)
```

Title:

MV Portfolio Frontier

Estimator: fastMveEstimator

Solver: solveRquadprog

Optimize: minRisk

Constraints: LongOnly

Portfolio Points: 5 of 5

Portfolio Weights:

	SBI	SPI	SII	LMI	MPI	ALT
1	1.0000	0.0000	0.0000	0.0000	0.0000	0.0000
2	0.1188	0.0271	0.1520	0.5566	0.0000	0.1455
3	0.0000	0.0709	0.2643	0.3290	0.0000	0.3358
4	0.0000	0.1196	0.3433	0.0000	0.0000	0.5371
5	0.0000	0.0000	0.0000	0.0000	0.0000	1.0000

Covariance Risk Budgets:

	SBI	SPI	SII	LMI	MPI	ALT
1	1.0000	0.0000	0.0000	0.0000	0.0000	0.0000

```

2  0.0420  0.0974  0.1682  0.2477  0.0000  0.4447
3  0.0000  0.1693  0.1313 -0.0088  0.0000  0.7082
4  0.0000  0.1819  0.0894  0.0000  0.0000  0.7287
5  0.0000  0.0000  0.0000  0.0000  0.0000  1.0000

```

Target Return and Risks:

	mean	mu	Cov	Sigma	CVaR	VaR
1	0.0000	0.0000	0.1261	0.1229	0.2758	0.2177
2	0.0215	0.0215	0.1230	0.1094	0.2468	0.1728
3	0.0429	0.0429	0.2465	0.2024	0.5479	0.3459
4	0.0643	0.0643	0.3977	0.3221	0.9183	0.5535
5	0.0858	0.0858	0.5684	0.4781	1.3343	0.8978

Description:

Mon May 4 12:04:54 2009 by user: Rmetrics

For the frontier plot, we recompute the robustified frontier on 20 points.

```

> setNFrontierPoints(mveSpec) <- 20
> mveFrontier <- portfolioFrontier(
  data = lppData, spec = mveSpec)
> tailoredFrontierPlot(
  mveFrontier,
  mText = "MVE Robustified MV Portfolio",
  risk = "Sigma")

```

The frontier plot is shown in [Figure 20.3](#).

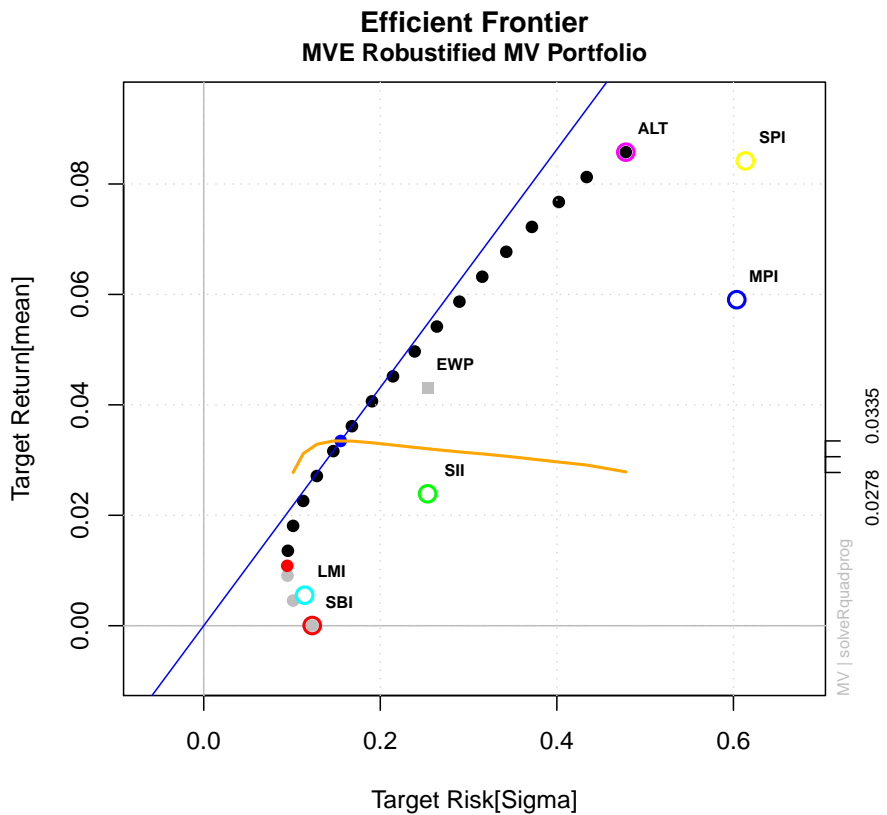
To complete this section, we will show the weights and the performance and risk attribution plots (left-hand column of [Figure 20.4](#)).

```

> col = divPalette(6, "RdBu")
> weightsPlot(mveFrontier, col = col,
  mtext = FALSE)
> boxL()
> text <- "MVE Robustified MV Portfolio"
> mtext(text, side = 3, line = 3, font = 2, cex = 0.9)
> weightedReturnsPlot(mveFrontier, col = col,
  mtext = FALSE)
> boxL()
> covRiskBudgetsPlot(mveFrontier, col = col,
  mtext = FALSE)
> boxL()

```





**Figure 20.3** Efficient frontier of a long-only constrained mean-variance portfolio with robust MVE covariance estimates: The plot includes the efficient frontier, the tangency line and tangency point for a zero risk-free rate, the equal weights portfolio, EWP, all single assets risk vs. return points. The line of Sharpe ratios is also shown, with its maximum coinciding with the tangency portfolio point. The range of the Sharpe ratio is printed on the right hand side axis of the plot.

For the colours we have chosen a diverging red to blue palette. The `boxL()` function draws an alternative frame around the graph with axes to the left and bottom.

## 20.4 The OGK Robustified Mean-Variance Portfolio

The Orthogonalized Gnanadesikan-Kettenring (OGK) estimator computes the orthogonalized pairwise covariance matrix estimate described in [Maronna & Zamar \(2002\)](#). The pairwise proposal goes back to [Gnanadesikan & Kettenring \(1972\)](#).

We first write a fast estimator function, `fastCovOGKEstimator()`

```
> covOGKEstimate <- covOGKEstimator(lppData)
> fastCovOGKEstimator <- function(x, spec = NULL, ...) covOGKEstimate
```

then we set the portfolio specification

```
> covOGKSpec <- portfolioSpec()
> setEstimator(covOGKSpec) <- "fastCovOGKEstimator"
> setNFrontierPoints(covOGKSpec) <- 5
```

and finally we compute the OGK robustified frontier

```
> covOGKFrontier <- portfolioFrontier(
  data = lppData, spec = covOGKSpec)
> print(covOGKFrontier)
```

Title:

MV Portfolio Frontier

Estimator: fastCovOGKEstimator

Solver: solveRquadprog

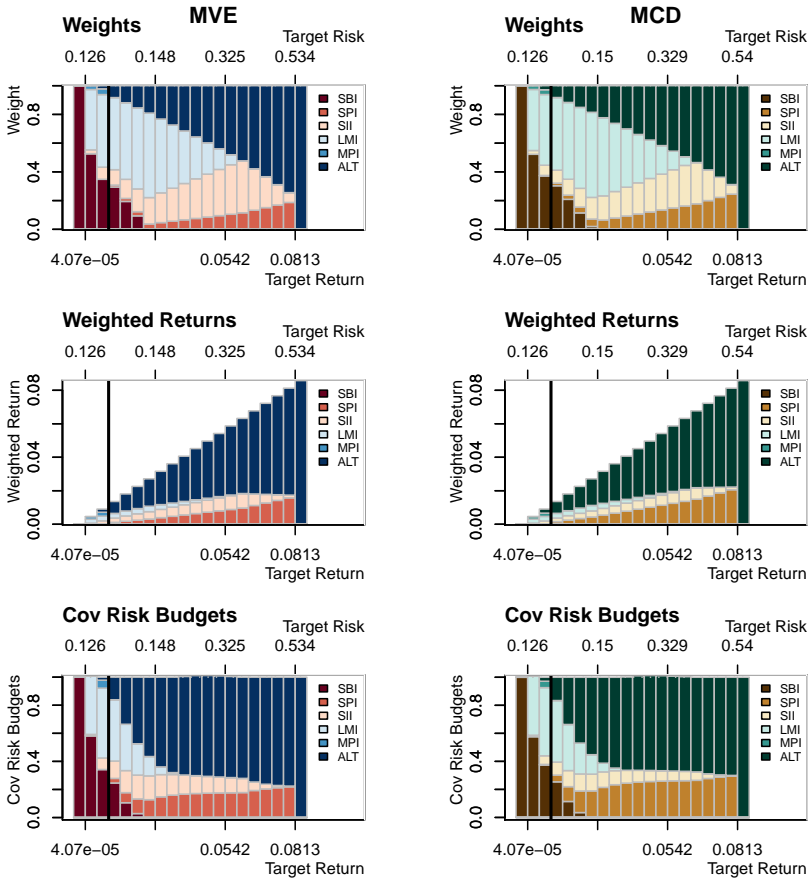
Optimize: minRisk

Constraints: LongOnly

Portfolio Points: 5 of 5

Portfolio Weights:

	SBI	SPI	SII	LMI	MPI	ALT
1	1.0000	0.0000	0.0000	0.0000	0.0000	0.0000
2	0.0990	0.0171	0.1593	0.5723	0.0000	0.1522
3	0.0000	0.0650	0.2661	0.3277	0.0000	0.3411



**Figure 20.4** Weights along the efficient frontier of a long-only constrained mean-variance portfolio with robust MVE (left) and MCD (right) covariance estimates: The graphs from top to bottom show the weights, the weighted returns or in other words the performance attribution, and the covariance risk budgets which are a measure for the risk attribution. The upper axis labels the target risk, and the lower labels the target return. The thick vertical line separates the efficient frontier from the minimum variance locus. The risk axis thus increases in value to both sides of the separator line. The legend to the right links the assets names to colour of the bars. Note that the comparison of weights between the MVE and MCD with sample covariance estimates shows a much better diversification of the portfolio weights and also leads to a better diversification of the covariance risk budgets.

```
4 0.0000 0.1179 0.3433 0.0000 0.0000 0.5388
5 0.0000 0.0000 0.0000 0.0000 0.0000 1.0000
```

## Covariance Risk Budgets:

	SBI	SPI	SII	LMI	MPI	ALT
1	1.0000	0.0000	0.0000	0.0000	0.0000	0.0000
2	0.0347	0.0583	0.1827	0.2605	0.0000	0.4639
3	0.0000	0.1540	0.1329	-0.0089	0.0000	0.7221
4	0.0000	0.1790	0.0895	0.0000	0.0000	0.7315
5	0.0000	0.0000	0.0000	0.0000	0.0000	1.0000

## Target Return and Risks:

	mean	mu	Cov	Sigma	CVaR	VaR
1	0.0000	0.0000	0.1261	0.1270	0.2758	0.2177
2	0.0215	0.0215	0.1223	0.1197	0.2419	0.1741
3	0.0429	0.0429	0.2460	0.2222	0.5450	0.3418
4	0.0643	0.0643	0.3976	0.3532	0.9175	0.5523
5	0.0858	0.0858	0.5684	0.5236	1.3343	0.8978

## Description:

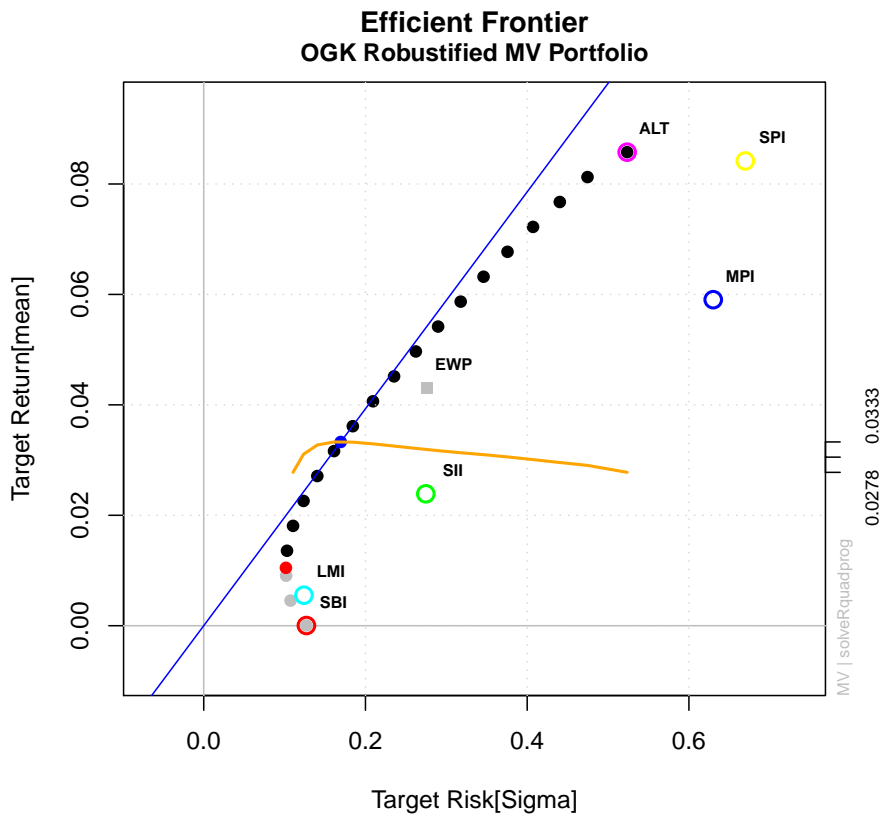
Mon May 4 12:04:56 2009 by user: Rmetrics

```
> setNFrontierPoints(covOGKSpec) <- 20
> covOGKFrontier <- portfolioFrontier(
  data = lppData, spec = covOGKSpec)
> tailoredFrontierPlot(
  covOGKFrontier,
  mText = "OGK Robustified MV Portfolio",
  risk = "Sigma")
```

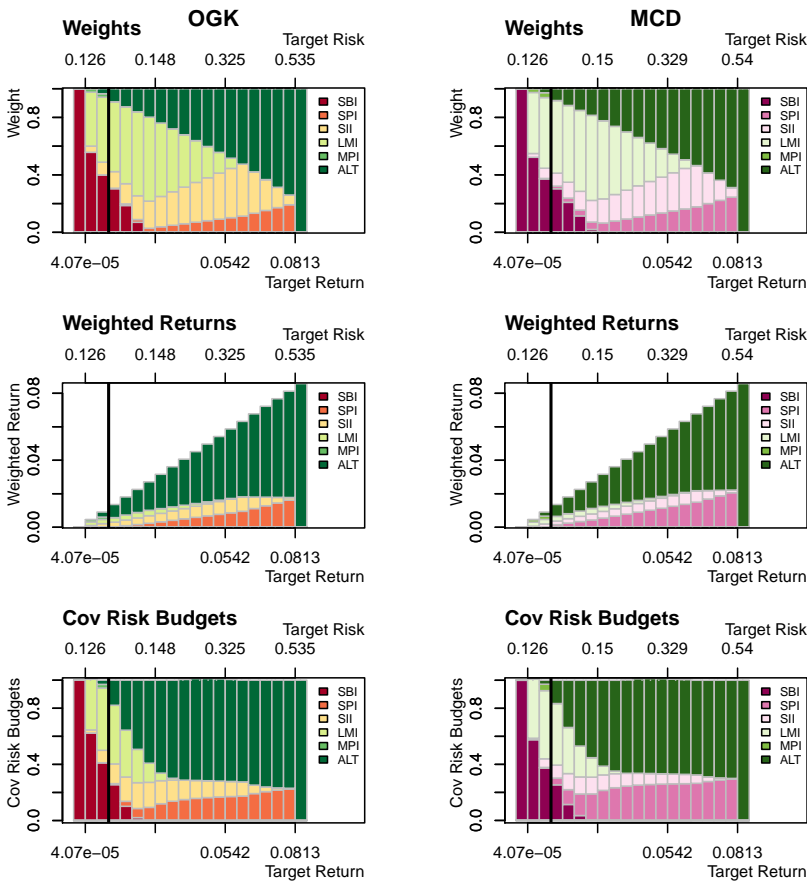
The frontier plot is shown in [Figure 20.5](#).

The weights, and the performance and risk attributions are shown in the left-hand column of [Figure 20.6](#).

```
> col = divPalette(6, "RdYlGn")
> weightsPlot(covOGKFrontier, col = col, mtext = FALSE)
> text <- "OGK Robustified MV Portfolio"
> mtext(text, side = 3, line = 3, font = 2, cex = 0.9)
> weightedReturnsPlot(covOGKFrontier, col = col, mtext = FALSE)
> covRiskBudgetsPlot(covOGKFrontier, col = col, mtext = FALSE)
```



**Figure 20.5** Efficient frontier of a long-only constrained mean-variance portfolio with robust OGK covariance estimates: The plot includes the efficient frontier, the tangency line and tangency point for a zero risk-free rate, the equal weights portfolio, EWP, all single assets risk vs. return points. The line of Sharpe ratios is also shown, with its maximum coinciding with the tangency portfolio point. The range of the Sharpe ratio is printed on the right hand side axis of the plot.



**Figure 20.6** Weights along the efficient frontier of a long-only constrained mean-variance portfolio with robust OGK (left) and MCD (right) covariance estimates: The graphs from top to bottom show the weights, the weighted returns or in other words the performance attribution, and the covariance risk budgets which are a measure for the risk attribution. The upper axis labels the target risk, and the lower labels the target return. The thick vertical line separates the efficient frontier from the minimum variance locus. The risk axis thus increases in value to both sides of the separator line. The legend to the right links the assets names to colour of the bars. Note that both estimators result in a similar behaviour concerning the diversification of the weights. A remark, for larger data sets of assets the OGK estimator becomes favourable since it is more computation efficient.

## 20.5 The Shrunked Mean-Variance Portfolio

A simple version of a shrinkage estimator of the covariance matrix is constructed as follows. We consider a convex combination of the empirical estimator with some suitable chosen target, e.g., the diagonal matrix. Subsequently, the mixing parameter is selected to maximize the expected accuracy of the shrunked estimator. This can be done by cross-validation, or by using an analytic estimate of the shrinkage intensity. The resulting regularized estimator can be shown to outperform the maximum likelihood estimator for small samples. For large samples, the shrinkage intensity will reduce to zero, therefore in this case the shrinkage estimator will be identical to the empirical estimator. Apart from increased efficiency, the shrinkage estimate has the additional advantage that it is always positive definite and well conditioned, (Schäfer & Strimmer, 2005)<sup>2</sup>.

```
> shrinkSpec <- portfolioSpec()
> setEstimator(shrinkSpec) <- "shrinkEstimator"
> setNFrontierPoints(shrinkSpec) <- 5
> shrinkFrontier <- portfolioFrontier(
  data = lppData, spec = shrinkSpec)
> print(shrinkFrontier)
```

Title:

MV Portfolio Frontier

Estimator: shrinkEstimator

Solver: solveRquadprog

Optimize: minRisk

Constraints: LongOnly

Portfolio Points: 5 of 5

Portfolio Weights:

	SBI	SPI	SII	LMI	MPI	ALT
1	1.0000	0.0000	0.0000	0.0000	0.0000	0.0000
2	0.1064	0.0022	0.1591	0.5649	0.0000	0.1674
3	0.0000	0.0207	0.2460	0.3441	0.0000	0.3892
4	0.0000	0.0410	0.3290	0.0126	0.0000	0.6174
5	0.0000	0.0000	0.0000	0.0000	0.0000	1.0000

Covariance Risk Budgets:

SBI	SPI	SII	LMI	MPI	ALT
-----	-----	-----	-----	-----	-----

<sup>2</sup> The covariance shrinkage estimator we use here is implemented in the Rpackage *corpcor* (Schaefer, Opgen-Rhein & Strimmer, 2008).

```

1  1.0000  0.0000  0.0000  0.0000  0.0000  0.0000
2  0.0378  0.0070  0.1812  0.2553  0.0000  0.5188
3  0.0000  0.0455  0.1154 -0.0094  0.0000  0.8485
4  0.0000  0.0576  0.0823 -0.0009  0.0000  0.8610
5  0.0000  0.0000  0.0000  0.0000  0.0000  1.0000

```

Target Return and Risks:

	mean	mu	Cov	Sigma	CVaR	VaR
1	0.0000	0.0000	0.1261	0.1449	0.2758	0.2177
2	0.0215	0.0215	0.1219	0.1283	0.2386	0.1772
3	0.0429	0.0429	0.2440	0.2430	0.5328	0.3386
4	0.0643	0.0643	0.3941	0.3920	0.8923	0.5868
5	0.0858	0.0858	0.5684	0.5656	1.3343	0.8978

Description:

Mon May 4 12:04:59 2009 by user: Rmetrics

The results are shown in [Figure 20.7](#) and [Figure 20.8](#).

## 20.6 How to Write Your Own Covariance Estimator

Since we have just to set the name of the mean/covariance estimator function calling the function `setEstimator()` it becomes straightforward to add user-defined covariance estimators.

Let us show an example. In R's recommended package MASS there is a function (`cov.trob()`) which estimates a covariance matrix assuming the data come from a multivariate Student's t distribution. This approach provides some degree of robustness to outliers without giving a high breakdown point<sup>3</sup>.

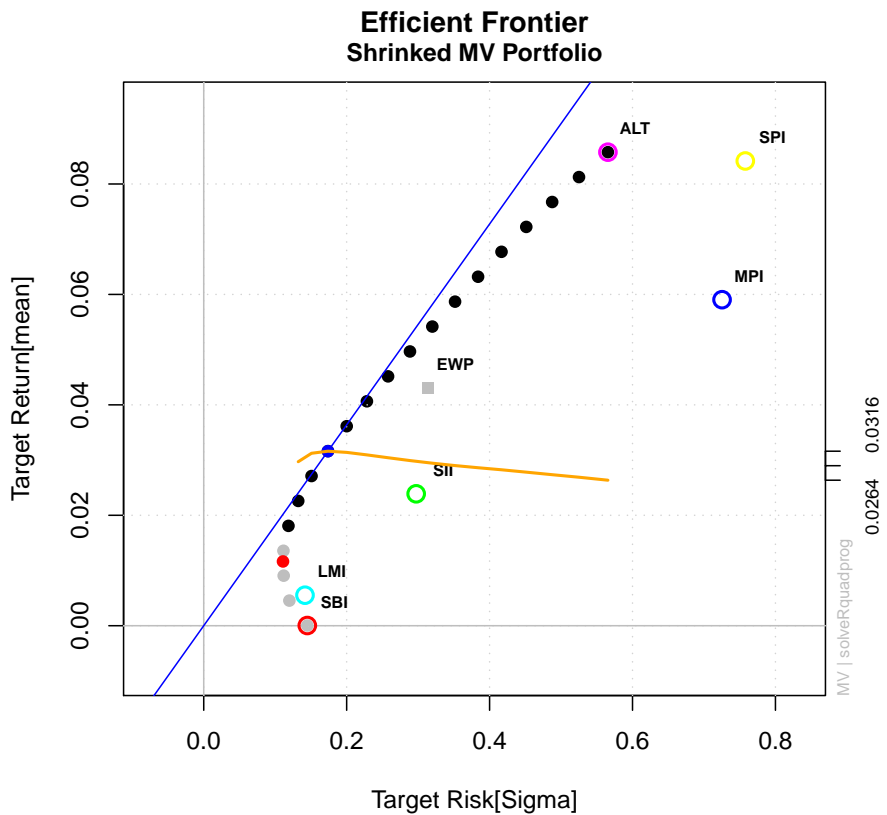
```

> covtEstimator <- function (x, spec = NULL, ...) {
  x.mat = as.matrix(x)
  list(mu = colMeans(x.mat), Sigma = MASS::cov.trob(x.mat)$cov) }
> covtSpec <- portfolioSpec()
> setEstimator(covtSpec) <- "covtEstimator"
> setNFrontierPoints(covtSpec) <- 5
> covtFrontier <- portfolioFrontier(

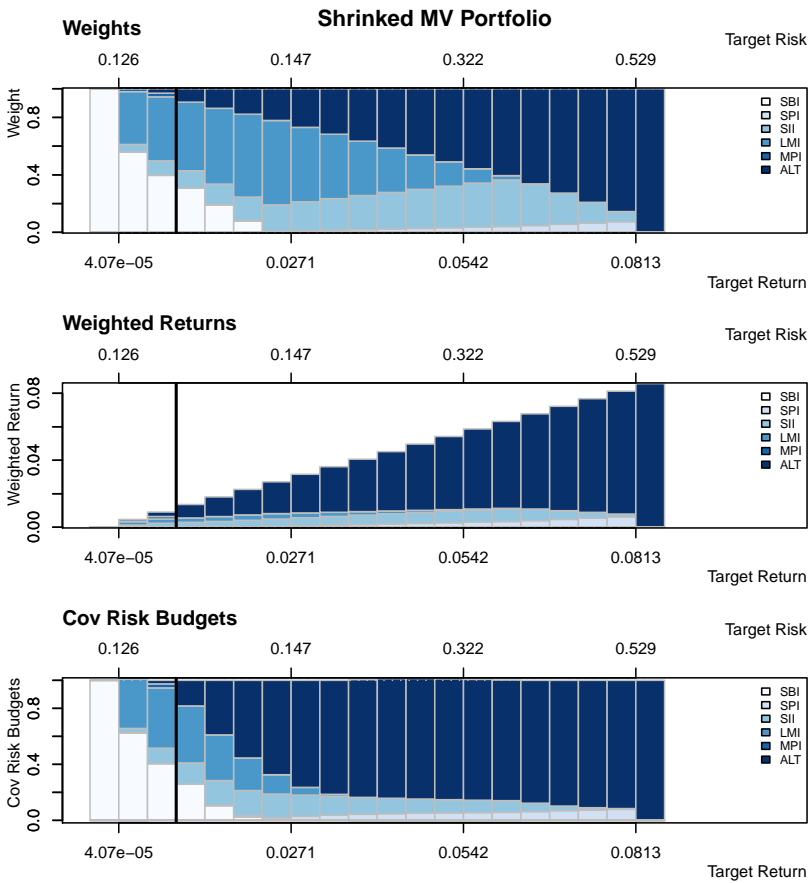
```

<sup>3</sup> Intuitively, the breakdown point of an estimator is the proportion of incorrect observations an estimator can handle before giving an arbitrarily unreasonable result





**Figure 20.7** Efficient frontier of a long-only constrained mean-variance portfolio with shrinked covariance estimates: The plot includes the efficient frontier, the tangency line and tangency point for a zero risk-free rate, the equal weights portfolio, EWP, all single assets risk vs. return points. The line of Sharpe ratios is also shown, with its maximum coinciding with the tangency portfolio point. The range of the Sharpe ratio is printed on the right hand side axis of the plot.



**Figure 20.8** Weights along the efficient frontier of a long-only constrained mean-variance portfolio with shrunk covariance estimates: The graphs from top to bottom show the weights, the weighted returns or in other words the performance attribution, and the covariance risk budgets which are a measure for the risk attribution. The upper axis labels the target risk, and the lower labels the target return. The thick vertical line separates the efficient frontier from the minimum variance locus. The risk axis thus increases in value to both sides of the separator line. The legend to the right links the assets names to colour of the bars.

```

      data = lppData, spec = covtSpec)
> print(covtFrontier)

Title:
MV Portfolio Frontier
Estimator:      covtEstimator
Solver:         solveRquadprog
Optimize:       minRisk
Constraints:     LongOnly
Portfolio Points: 5 of 5

Portfolio Weights:
      SBI   SPI   SII   LMI   MPI   ALT
1 1.0000 0.0000 0.0000 0.0000 0.0000 0.0000
2 0.0749 0.0156 0.1490 0.6061 0.0000 0.1544
3 0.0000 0.0517 0.2479 0.3420 0.0000 0.3583
4 0.0000 0.0896 0.3441 0.0000 0.0000 0.5663
5 0.0000 0.0000 0.0000 0.0000 0.0000 1.0000

Covariance Risk Budgets:
      SBI   SPI   SII   LMI   MPI   ALT
1 1.0000 0.0000 0.0000 0.0000 0.0000 0.0000
2 0.0260 0.0527 0.1627 0.2873 0.0000 0.4714
3 0.0000 0.1205 0.1179 -0.0089 0.0000 0.7706
4 0.0000 0.1326 0.0897 0.0000 0.0000 0.7777
5 0.0000 0.0000 0.0000 0.0000 0.0000 1.0000

Target Return and Risks:
      mean   mu   Cov Sigma  CVaR  VaR
1 0.0000 0.0000 0.1261 0.1109 0.2758 0.2177
2 0.0215 0.0215 0.1220 0.1043 0.2420 0.1741
3 0.0429 0.0429 0.2451 0.2006 0.5424 0.3432
4 0.0643 0.0643 0.3958 0.3217 0.9066 0.5645
5 0.0858 0.0858 0.5684 0.4697 1.3343 0.8978

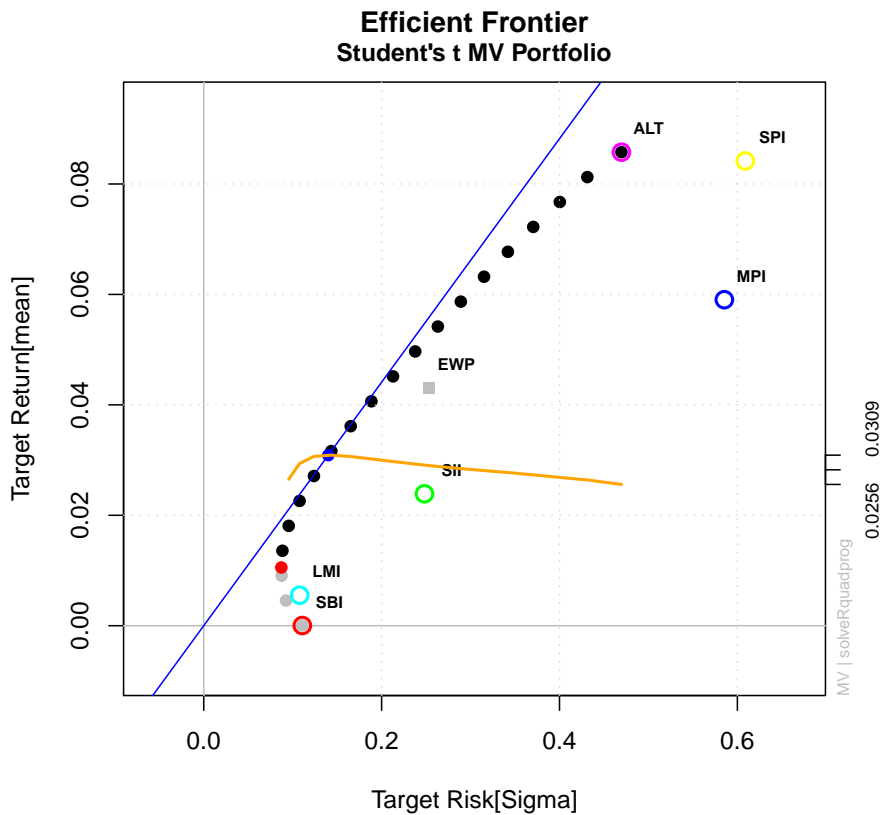
Description:
Mon May  4 12:05:00 2009 by user: Rmetrics

> setNFrontierPoints(covtSpec) <- 20
> covtFrontier <- portfolioFrontier(
      data = lppData, spec = covtSpec)
> tailoredFrontierPlot(
      shrinkFrontier,
      mText = "Student's t MV Portfolio",
      risk = "Sigma")

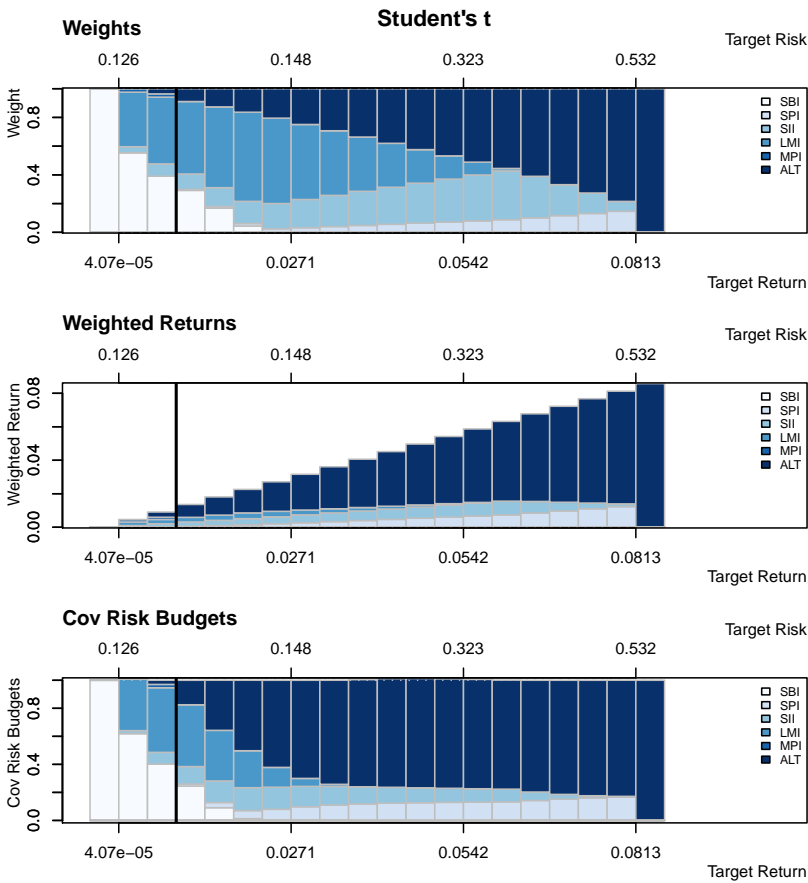
```

The frontier plot is shown in [Figure 20.9](#). The weights and related plots are computed in the usual way, and presented in [Figure 20.10](#).

```
> weightsPlot(covtFrontier, mtext = FALSE)
> text <- "Student's t"
> mtext(text, side = 3, line = 3, font = 2, cex = 0.9)
> weightedReturnsPlot(covtFrontier, mtext = FALSE)
> covRiskBudgetsPlot(covtFrontier, mtext = FALSE)
```



**Figure 20.9** Efficient frontier of a long-only constrained mean-variance portfolio with Student's t estimated covariance estimates: The plot includes the efficient frontier, the tangency line and tangency point for a zero risk-free rate, the equal weights portfolio, EWP, all single assets risk vs. return points. The line of Sharpe ratios is also shown, with its maximum coinciding with the tangency portfolio point. The range of the Sharpe ratio is printed on the right hand side axis of the plot.



**Figure 20.10** Weights along the efficient frontier of a long-only constrained mean-variance portfolio with robust Student's *t* covariance estimates: The graphs from top to bottom show the weights, the weighted returns or in other words the performance attribution, and the covariance risk budgets which are a measure for the risk attribution. The upper axis labels the target risk, and the lower labels the target return. The thick vertical line separates the efficient frontier from the minimum variance locus. The risk axis thus increases in value to both sides of the separator line. The legend to the right links the assets names to colour of the bars.

## Appendix A

### Packages Required for this ebook

Required R package(s):

```
> library(fPortfolio)
```

In the following we briefly describe the packages required for this ebook. There are two major packages named `fPortfolio` and `fPortfolioBacktest`. The first package, `fPortfolio`, is the basic package which allows us to model mean-variance and mean-CVaR portfolios with linear constraints and to analyze the data sets of assets used in the portfolios. The second package, `fPortfolioBacktest`, adds additional functionality, including backtesting functions over rolling windows.

#### *Rmetrics Package: fPortfolio*

`fPortfolio` (Würtz & Chalabi, 2009a) contains the R functions for solving mean-variance and mean-CVaR portfolio problems with linear constraints. The package depends on the contributed R packages `quadprog` (Weingessel, 2004) for quadratic programming problems and `Rglpk` (Theussl & Hornik, 2009) with the appropriate solvers for quadratic and linear programming problems.

```
> listDescription(fPortfolio)
```

```
fPortfolio Description:
```

URL: <http://www.rmetrics.org>  
Built: R 2.9.0; ; 2009-04-23 09:48:16 UTC; unix



## About the Authors

**Diethelm Würtz** is private lecturer at the Institute for Theoretical Physics, ITP, and for the Curriculum Computational Science and Engineering, CSE, at the Swiss Federal Institute of Technology in Zurich. He teaches Econophysics at ITP and supervises seminars in Financial Engineering at CSE. Diethelm is senior partner of Finance Online, an ETH spin-off company in Zurich, and co-founder of the Rmetrics Association.

**Yohan Chalabi** has a master in Physics from the Swiss Federal Institute of Technology in Lausanne. He is now a PhD student in the Econophysics group at ETH Zurich at the Institute for Theoretical Physics. Yohan is a co-maintainer of the Rmetrics packages.

**William Chen** has a master in statistics from University of Auckland in New Zealand. In the summer of 2008, he did a Student Internship in the Econophysics group at ETH Zurich at the Institute for Theoretical Physics. During his three months internship, William contributed to the portfolio backtest package.

**Andrew Ellis** read neuroscience and mathematics at the University in Zurich. He is working for Finance Online and is currently doing a 6 month Student Internship in the Econophysics group at ETH Zurich at the Institute for Theoretical Physics. Andrew is working on the Rmetrics documentation project and co-authored this ebook on portfolio optimization with Rmetrics.

